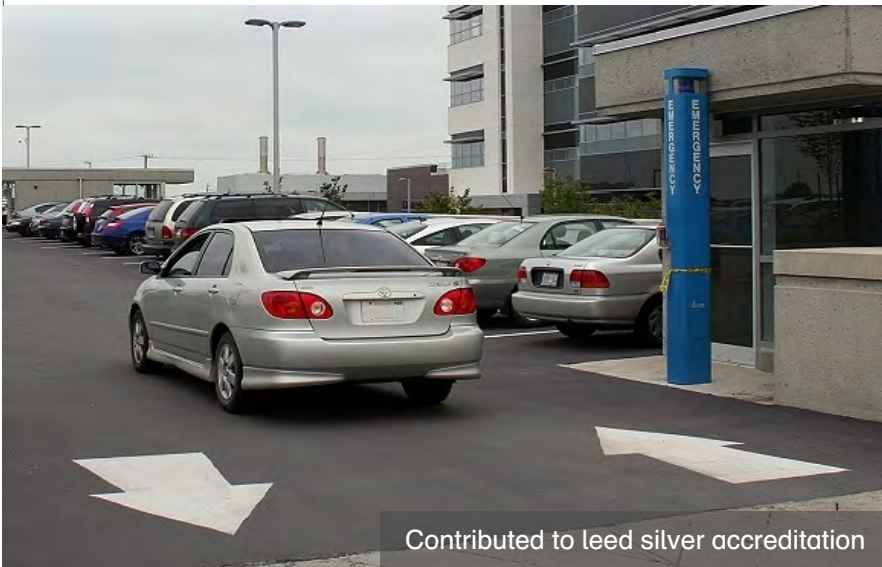




## This Parking Lot Surface Is Solar Reflective!




Contributed to leed silver accreditation

Pavement surfaces comprise roughly 30%-40% of the urban footprint and are a leading cause of Urban Heat Island Effect.

Reducing Heat Island Effect results in lower energy consumption: Air conditioning charges in adjacent buildings can potentially be cut by up to 1/3.

**StreetBondSR** solar reflective coatings facilitate Urban Heat Island mitigation by reducing the amount of solar energy absorbed by pavement surfaces.

**StreetBondSR**'s unique formulation combines high solar reflectance in color options designed to help hide soiling and typical surface wear & tear thereby minimizing maintenance.

Color Options for  
 Parking Lots

## Green!

### LEED® Credits

Limestone Grey  
 LEED Credit  
 (SRI=65)

The use of **StreetBondSR** can contribute LEED® credits under the following categories:

Sustainable Sites (SSc7.1) – Heat Island Effect (Non-Roof)

Green Neighborhood Development – Green Infrastructure & Buildings – Heat Island Reduction (GIB Credit 9)

Slate  
 LEED Credit  
 (SRI=33)

One credit can be realized through the use of surface materials which have a Solar Reflectance Index (SRI) of 29 or higher applied to at least 50% of the sites total hardscape including parking lots, roads, sidewalks and courtyards.



Regular Asphalt



Asphalt with  
**StreetBondSR**  
 Reflective Coating

Making Asphalt Beautiful

1.800.688.5652  
[www.integratedpaving.com](http://www.integratedpaving.com)

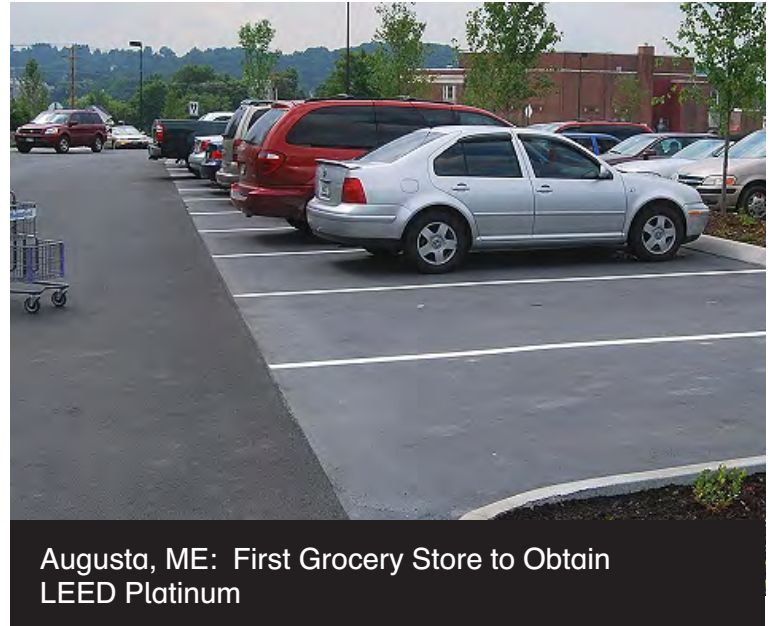


# StreetBondSR™

Solar Reflective For Parking Lots



Waterloo, ON: Image of Project Installation at Research In Motion's Main Office Area



Augusta, ME: First Grocery Store to Obtain LEED Platinum

**StreetBondSR** (in slate color) was used at Research in Motion's 59,000 sq. ft. parking lot area. The use of **StreetBondSR** led to LEED credits that contributed to overall LEED certification of the building.

Slate as a color choice maintains the traditional parking lot look and works well to obscure dirt, grime and darkening.

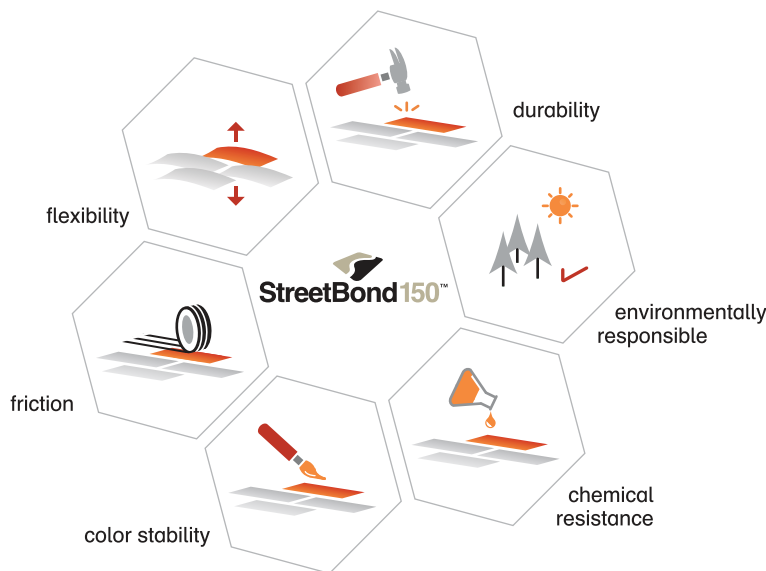
Approximately 70,000 sq. feet of **StreetBondSR** dark slate coating went onto the parking area at Hannaford's Augusta, Maine store location.

Hannaford's was able to obtain enough LEED credits to become the first ever LEED Platinum certified grocery store in the world.

## StreetBondSR — All the Benefits of StreetBond150 with Solar Reflective Characteristics!

A highly refined balance of **6** critical performance characteristics that bonds permanently to asphalt surfaces.

Quality results and enduring beauty.



Making Asphalt Beautiful

1.800.688.5652  
www.integratedpaving.com